

Demographic characteristics

The Bendigo Loddon Primary Care Partnership (PCP) region comprises the Local Government areas of Loddon Shire and City of Greater Bendigo. The region spans an area of approximately 9,700 square kilometres and, in 2009, had an estimated population of 110,452. The population, outside of Bendigo, is widely dispersed and takes in a number of small towns.

Population

Estimated resident populations

	Loddon	Greater Bendigo	BLPCP	Victoria
June 2006	8,087	96,543	104,630	5,126,540
June 2009	8,079	102,373	110,452	5,443,228
June 2010	8,047	104,192	112,239	5,545,932
Change 06-10	-0.5%	7.9%	7.3%	8.2%

ABS 3218.0 (March 2011) www.abs.gov.au

Indigenous population

In 2006, an estimated 1.1% of the region's residents were of Aboriginal and/or Torres Strait Islander origin, compared to 0.6% across Victoria. The highest proportions of Indigenous population lived in Boort and Inglewood and the lowest lived in Axedale and Heathcote.

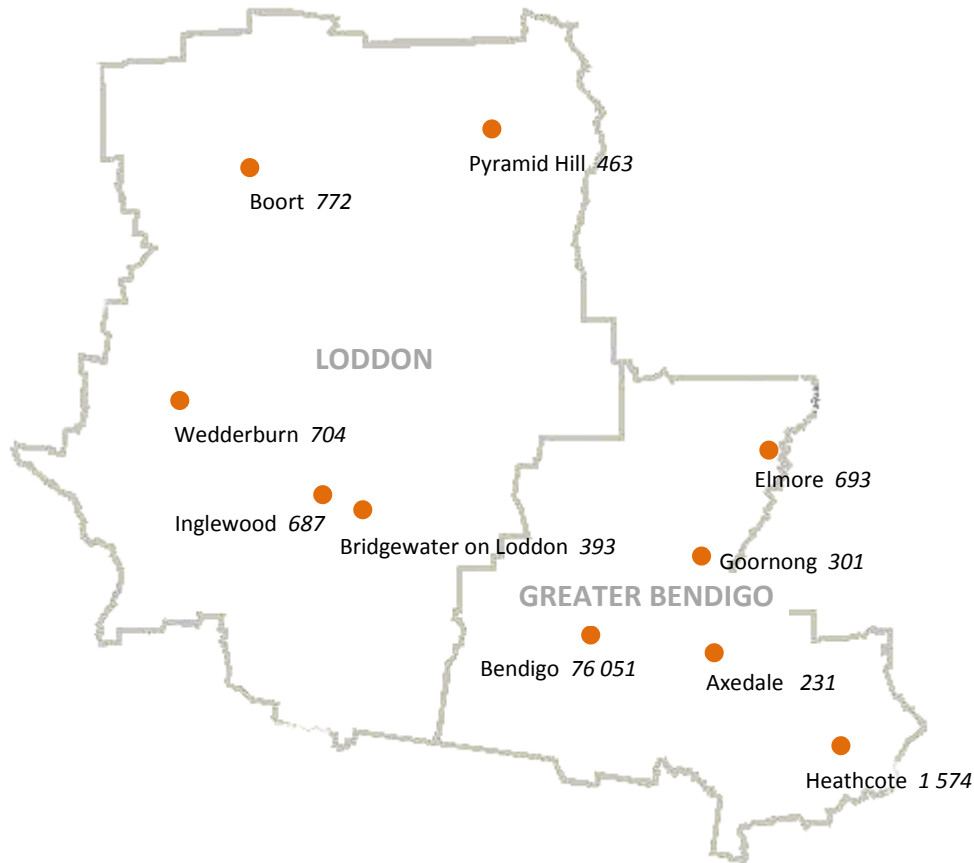
Number and proportion of total population that are Indigenous persons - 2006 (ranked)

Location	Number	%
Axedale	0	0.0%
Heathcote	9	0.6%
Victoria	30,140	0.6%
Pyramid Hill	4	0.9%
Elmore	7	1.0%
Bridgewater	4	1.0%
Loddon Shire LGA	80	1.0%
Greater Bendigo LGA	1,020	1.1%
Bendigo	906	1.2%
Regional Victoria	15,925	1.2%
Goornong	4	1.3%
Wedderburn	10	1.4%
Inglewood	16	2.3%
Boort	20	2.6%

ABS 2006 census www.abs.gov.au

Population distribution

In 2006, around 19% of the region's usual resident population lived in rural areas and small settlements, with the balance living in towns. The map on the following page sets out how the region's population was distributed across its towns.



ABS 2006 census www.abs.gov.au

Population forecast

According to the Victorian Government's 2008 *Victoria in Future* population projections, the population of the Bendigo Loddon PCP region will reach 133,696 by 2021. Most of this population growth will take place in the City of Greater Bendigo.

Bendigo-Loddon PCP region population forecast (based on *Victoria in Future* 2008 projections)

Area	2011	2016	2021	2026
Greater Bendigo	106,346	116,006	125,897	135,435
Loddon	7,990	7,874	7,799	7,774
Total (PCP Region)	114,336	123,880	133,696	143,209

www.dse.vic.gov.au/victoriainfuture/

The City of Greater Bendigo has commissioned an independent population forecast. Based on this forecast, the population of the Bendigo Loddon PCP region would reach 128,898 by 2021.

Bendigo-Loddon PCP region population forecast*

Area	2011	2016	2021	2026
Greater Bendigo	104,068	112,444	121,099	129,943
Loddon	7,990	7,874	7,799	7,774
Total (PCP Region)	112,058	120,318	128,898	137,717

www.dse.vic.gov.au/victoriainfuture/ and www.id.com.au/bendigo/forecastid/ *(based on *Victoria in Future* 2008 population projections for Loddon and i.d. consulting population projections for City of Greater Bendigo)

Age structure

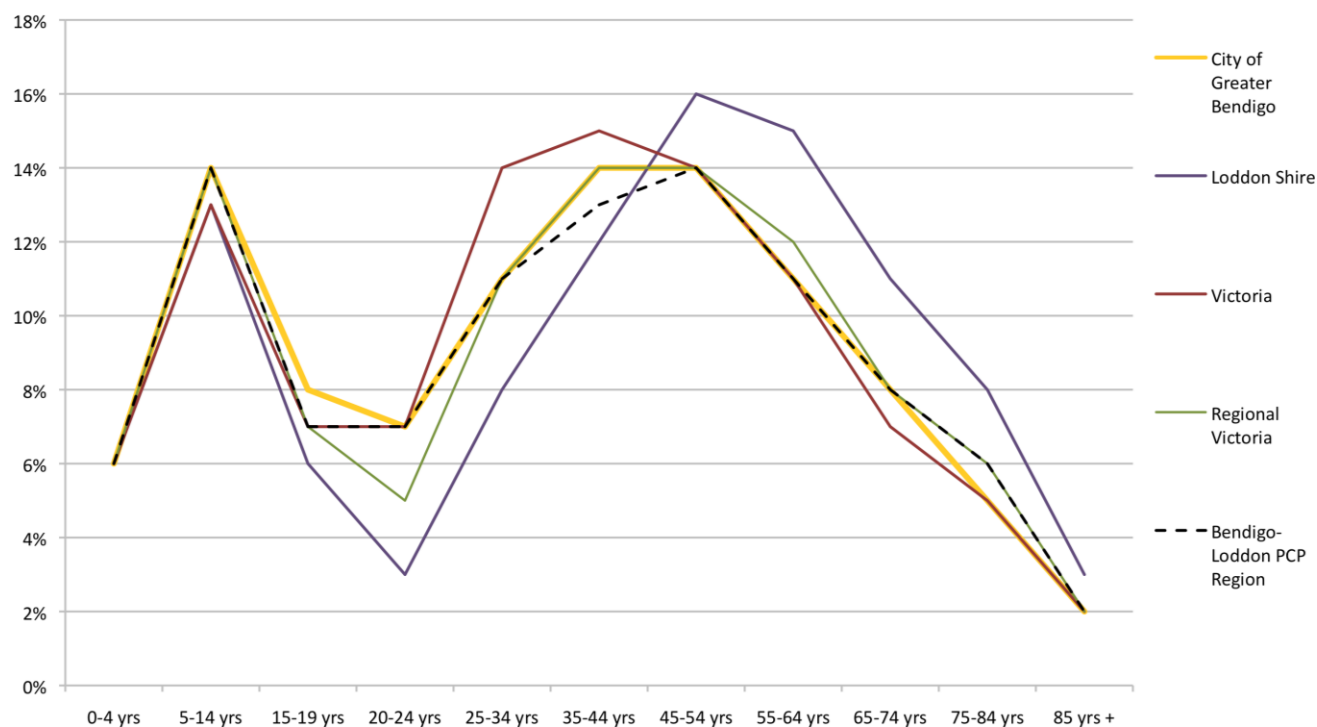
The age structure of the Bendigo Loddon PCP region is similar to that of Regional Victoria, while it has a higher proportion of population aged 65 to 84 compared to Victoria. However, this pattern is influenced by the presence of the regional city of Bendigo in the PCP region. Loddon Shire's age structure is markedly different to City of Greater Bendigo, Regional Victoria and Victoria. A lower proportion of population in the 15 to 44 year old age brackets and a higher proportion of population in the 45 to 85+ years age brackets reflects the trends in many rural areas of population leaving to seek education and employment.

Age structure of population (2006)

Age	Greater Bendigo		Loddon		BLPCP region		Regional Victoria		Victoria	
0-4	5,779	6%	434	6%	6,213	6%	80,873	6%	305,938	6%
5-14	13,295	14%	1057	13%	14,352	14%	191,581	14%	644,451	13%
15-19	7,013	8%	461	6%	7,474	7%	94,095	7%	335,181	7%
20-24	6,454	7%	245	3%	6,699	7%	71,653	5%	338,715	7%
25-34	10,710	11%	637	8%	11,347	11%	142,017	11%	677,883	14%
35-44	12,637	14%	939	12%	13,576	13%	184,733	14%	741,348	15%
45-54	13,179	14%	1235	16%	14,414	14%	193,215	14%	679,516	14%
55-64	10,356	11%	1161	15%	11,517	11%	162,298	12%	534,487	11%
65-74	7,030	8%	868	11%	7,898	8%	109,806	8%	345,526	7%
75-84	4,998	5%	596	8%	5,594	6%	77,383	6%	245,506	5%
85 +	1,802	2%	203	3%	2,005	2%	25,782	2%	83,872	2%
Total	93,253	100%	7,836	100%	101,089	100%	1,333,436	100%	4,932,423	100%

ABS 2006 census www.abs.gov.au

Age structure of Bendigo-Loddon PCP population 2006

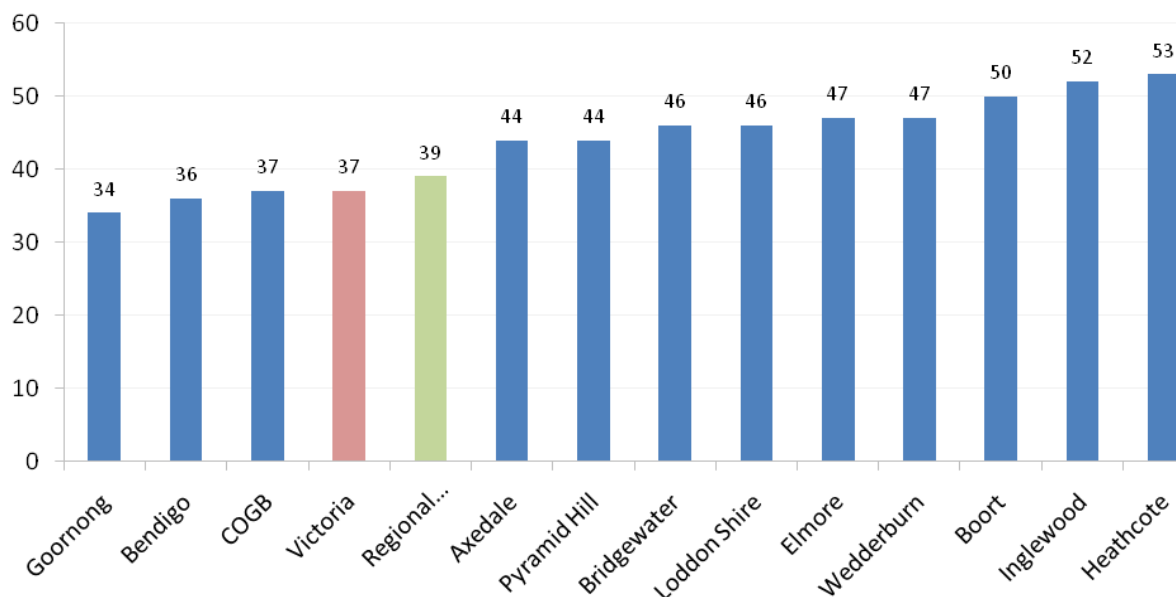


ABS 2006 census www.abs.gov.au

Median age

In 2006, the median age of Loddon Shire's population was 46 and Greater Bendigo's population was 37, compared to 37 for Victoria and 39 for regional Victoria. This reflects the general trend of aging population seen in many rural communities and the capacity of larger centres to attract younger population.

Median ages in towns of the Bendigo-Loddon PCP region 2006



2006 census www.abs.gov.au

Age structure by town

In 2006, 21% of Loddon Shire's population was aged over 65, compared to 15% in Greater Bendigo. Bendigo and neighbouring commuter towns, Goornong and Axedale, had a lower proportion of population in this age bracket, while more isolated towns had a higher proportion.

Compared to Regional Victoria (6.0%), Loddon Shire (5.5%) and Greater Bendigo (6.2%) had a similar proportion of population aged 0-4 yrs. Most small towns in the region had a similar or lower proportion of population in this age group, except Goornong, which had 8%.

In 2006, 5.9% of Loddon's population was aged 15-19yrs, compared to Regional Victoria and Victoria (both 7%), while Greater Bendigo had 7.5%. Many small towns had a lower proportion of population in this age group, although Axedale (8.2%) had the highest proportion. In 2006, 3% of Loddon's population was aged 20-24yrs, while 7% of Greater Bendigo's population was in this age group. In most cases, Bendigo had at least double the proportion of population in this age bracket compared to small towns in the PCP region.

Age groups by location (2006)

	0-4 yrs		15-19		20-24		65 yrs and over	
	Number	% of Pop.	Number	% of Pop.	Number	% of Pop.	Number	% of Pop.
Axedale	7	3.0%	19	8.2%	4	1.7%	22	9.5%
Bendigo	4,899	6.4%	5,740	7.5%	5,825	7.7%	11,665	15.3%
Boort	35	4.5%	49	6.4%	15	1.9%	247	32.0%
Bridgewater	18	4.6%	27	6.9%	14	3.6%	87	22.2%
Gr. Bendigo (LGA)	5,779	6.2%	7,013	7.5%	6,454	6.9%	13,830	14.8%
Elmore	38	5.5%	31	4.5%	19	2.7%	173	24.9%
Goornong	24	7.9%	14	4.6%	18	6.0%	39	12.9%
Heathcote	57	3.6%	85	5.4%	55	3.5%	521	33.1%
Inglewood	36	5.3%	29	4.2%	24	3.5%	221	32.3%
Loddon Shire (LGA)	434	5.5%	461	5.9%	245	3.0%	1,667	21.3%
Pyramid Hill	27	5.8%	19	4.1%	15	3.2%	108	23.3%
Wedderburn	42	6.0%	33	4.7%	26	3.7%	191	27.2%
<i>Regional Victoria</i>	<i>80,873</i>	<i>6.0%</i>	<i>94,095</i>	<i>7.1%</i>	<i>71,653</i>	<i>5.4%</i>	<i>212,971</i>	<i>16.0%</i>
Victoria	305,938	6.2%	335,181	6.8%	338,715	6.9%	674,904	13.7%

Source: ABS population of usual residence 2006

Projected change to population age structure

The 2008 Victoria in Future population projections set out the projected change in population structure by year. As the table below illustrates, the proportion of population aged 65 or over is projected to increase significantly. The projected proportion of population aged 65 or over for Greater Bendigo and Loddon is higher than for Victoria and Loddon is projected to have a much higher proportion of population aged 65 years and over than Greater Bendigo.

Projected change to 65 yrs + age group 2011 - 2021

	2011		2016		2021	
	number	% of pop.	number	% of pop.	number	% of pop.
Greater Bendigo	16,243	15.3%	20,056	17.3%	24,303	19.3%
Loddon Shire	1,763	22.1%	2,000	25.4%	2,202	28.2%
Regional Victoria	250,278	17.1%	303,277	19.6%	359,268	22.1%
Victoria	790,018	14.2%	945,920	15.9%	1106645	17.5%

Victoria in future population projections (2008) www.dse.vic.gov.au/victoriainfuture/

Family structure

Data from the 2006 census indicates that Loddon Shire had a higher proportion of couple families with no children (47%) than the Victorian average (36%). Compared to the Victorian average, Loddon and Greater Bendigo had a lower proportion of couple families with children (of any age) and Greater Bendigo had a higher proportion of lone parent families with children aged under 15yrs. Loddon had a lower proportion of lone parent families, with children of any age, compared to the Victorian average.

Family composition (2006)

	Greater Bendigo		Loddon		Victoria
	Number	% of all families	Number	% of all families	% of all families
Couple family with no children	9,391	38%	981	47%	36%
Couple family with children	10,408	42%	815	39%	47%
<i>Couple family with children under 15</i>	7,421	30%	564	27%	31%
<i>Couple family with no children under 15</i>	2,987	12%	251	12%	15%
One parent family with children	4,431	18%	275	13%	15%
<i>One parent family with children under 15</i>	2,654	11%	153	7%	8%
<i>One parent family with no children under 15</i>	1,777	7%	122	6%	7%
Other family	369	2%	33	2%	2%
Total	24,599	100%	2,104	100%	100%

www.abs.gov.au

Cultural diversity

In 2006, most Bendigo-Loddon PCP region residents were born in Australia. After Australia, the most common countries of birth were United Kingdom, New Zealand, Netherlands and Germany.

Country of Birth (2006)

	Greater Bendigo LGA		Loddon LGA		Regional Victoria	
	Number	Percentage	Number	Percentage	Number	Percentage
Australia	82,848	89%	6,888	88%	1,124,362	84.3%
Austria	36	0%	3	0%	1,063	0.1%
Bosnia and Herzegovina	10	0%	0	0%	621	0.0%
Cambodia	6	0%	0	0%	145	0.0%
Canada	62	0%	0	0%	1,041	0.1%
Chile	0	0%	0	0%	147	0.0%
China (excl. SARs and Taiwan Province)	122	0%	0	0%	1,752	0.1%
Croatia	46	0%	12	0%	2,809	0.2%
Cyprus	14	0%	0	0%	371	0.0%
Egypt	21	0%	3	0%	418	0.0%
Fiji	25	0%	0	0%	539	0.0%
Former Yugoslav Republic of Macedonia	6	0%	0	0%	1,025	0.1%
France	21	0%	0	0%	537	0.0%
Germany	242	0%	32	0%	6,896	0.5%
Greece	78	0%	9	0%	2,009	0.2%
Hong Kong (SAR of China)	22	0%	0	0%	500	0.0%
Hungary	30	0%	8	0%	821	0.1%
India	123	0%	3	0%	2,054	0.2%
Indonesia	71	0%	0	0%	556	0.0%
Iran	0	0%	0	0%	293	0.0%
Iraq	15	0%	0	0%	646	0.0%
Ireland	103	0%	12	0%	1,954	0.1%
Italy	150	0%	8	0%	9,008	0.7%
Japan	25	0%	0	0%	479	0.0%
Korea, Republic of (South)	21	0%	0	0%	327	0.0%
Lebanon	6	0%	3	0%	277	0.0%
Malaysia	105	0%	9	0%	1,276	0.1%
Malta	51	0%	10	0%	1,888	0.1%
Mauritius	11	0%	0	0%	210	0.0%
Netherlands	279	0%	35	0%	8,229	0.6%
New Zealand	567	1%	65	1%	11,363	0.9%
Papua New Guinea	44	0%	0	0%	484	0.0%
Philippines	177	0%	3	0%	2,761	0.2%
Poland	45	0%	0	0%	1,613	0.1%
Portugal	0	0%	0	0%	193	0.0%
Romania	9	0%	0	0%	300	0.0%
Russian Federation	10	0%	3	0%	262	0.0%
Samoa	6	0%	0	0%	206	0.0%
Singapore	41	0%	3	0%	620	0.0%
South Africa	116	0%	3	0%	1,998	0.1%
South Eastern Europe, not further defined	32	0%	15	0%	1,693	0.1%
Spain	3	0%	0	0%	527	0.0%
Sri Lanka	101	0%	0	0%	842	0.1%
Taiwan	6	0%	0	0%	146	0.0%
Thailand	38	0%	0	0%	620	0.0%
Turkey	8	0%	0	0%	1,147	0.1%
Ukraine	8	0%	0	0%	465	0.0%
United Kingdom	2,199	2%	221	3%	48,026	3.6%
United States of America	115	0%	9	0%	2,134	0.2%
Viet Nam	27	0%	4	0%	877	0.1%
Born elsewhere	325	0%	36	0%	8,905	0.7%
Total	93,252	100%	7,836	100%	1,333,436	100.0%