

Demographic characteristics

The Bendigo Loddon Primary Care Partnership (PCP) region comprises the Local Government areas of Loddon Shire and City of Greater Bendigo. The region spans an area of approximately 9,700 square kilometres and, in 2009, had an estimated population of 110,452. The population, outside of Bendigo, is widely dispersed and takes in a number of small towns.

Population

Estimated resident populations

| | Loddon | Greater Bendigo | BLPCP | Victoria |
|--------------|--------|-----------------|---------|-----------|
| June 2006 | 8,087 | 96,543 | 104,630 | 5,126,540 |
| June 2009 | 8,079 | 102,373 | 110,452 | 5,443,228 |
| June 2010 | 8,047 | 104,192 | 112,239 | 5,545,932 |
| Change 06-10 | -0.5% | 7.9% | 7.3% | 8.2% |

ABS 3218.0 (March 2011) www.abs.gov.au

Indigenous population

In 2006, an estimated 1.1% of the region's residents were of Aboriginal and/or Torres Strait Islander origin, compared to 0.6% across Victoria. The highest proportions of Indigenous population lived in Boort and Inglewood and the lowest lived in Axedale and Heathcote.

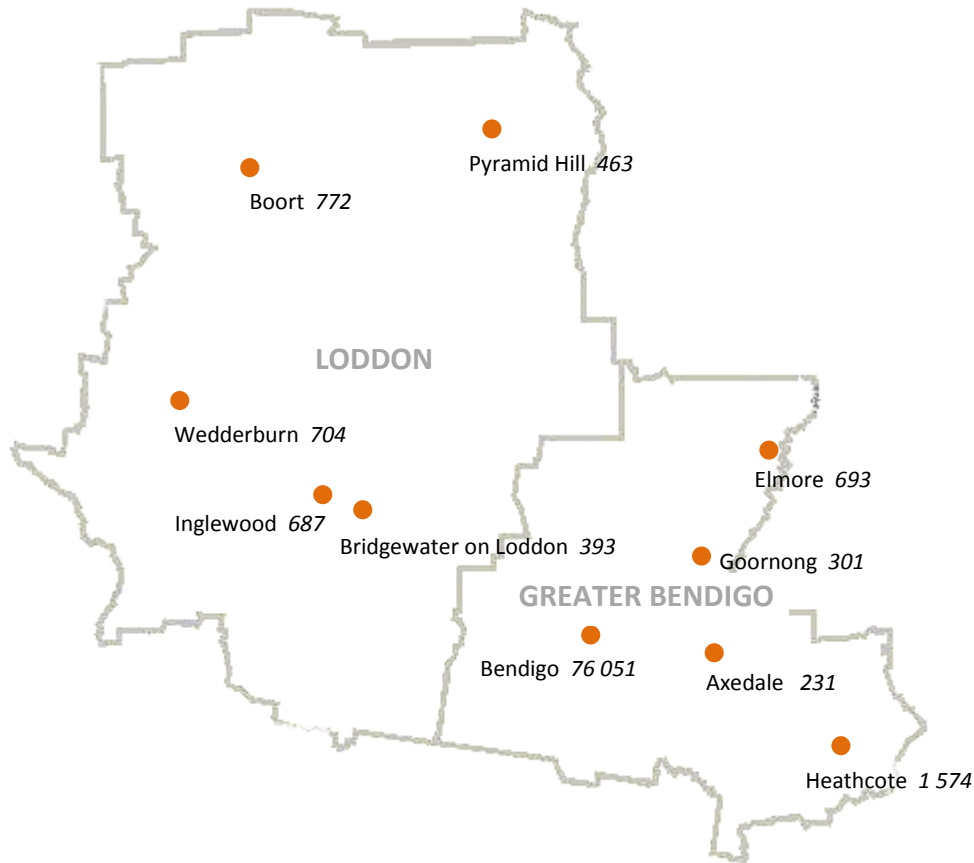
Number and proportion of total population that are Indigenous persons - 2006 (ranked)

| Location | Number | % |
|---------------------|--------|------|
| Axedale | 0 | 0.0% |
| Heathcote | 9 | 0.6% |
| Victoria | 30,140 | 0.6% |
| Pyramid Hill | 4 | 0.9% |
| Elmore | 7 | 1.0% |
| Bridgewater | 4 | 1.0% |
| Loddon Shire LGA | 80 | 1.0% |
| Greater Bendigo LGA | 1,020 | 1.1% |
| Bendigo | 906 | 1.2% |
| Regional Victoria | 15,925 | 1.2% |
| Goornong | 4 | 1.3% |
| Wedderburn | 10 | 1.4% |
| Inglewood | 16 | 2.3% |
| Boort | 20 | 2.6% |

ABS 2006 census www.abs.gov.au

Population distribution

In 2006, around 19% of the region's usual resident population lived in rural areas and small settlements, with the balance living in towns. The map on the following page sets out how the region's population was distributed across its towns.



ABS 2006 census www.abs.gov.au

Population forecast

According to the Victorian Government's 2008 *Victoria in Future* population projections, the population of the Bendigo Loddon PCP region will reach 133,696 by 2021. Most of this population growth will take place in the City of Greater Bendigo.

Bendigo-Loddon PCP region population forecast (based on *Victoria in Future* 2008 projections)

| Area | 2011 | 2016 | 2021 | 2026 |
|---------------------------|----------------|----------------|----------------|----------------|
| Greater Bendigo | 106,346 | 116,006 | 125,897 | 135,435 |
| Loddon | 7,990 | 7,874 | 7,799 | 7,774 |
| Total (PCP Region) | 114,336 | 123,880 | 133,696 | 143,209 |

www.dse.vic.gov.au/victoriainfuture/

The City of Greater Bendigo has commissioned an independent population forecast. Based on this forecast, the population of the Bendigo Loddon PCP region would reach 128,898 by 2021.

Bendigo-Loddon PCP region population forecast*

| Area | 2011 | 2016 | 2021 | 2026 |
|---------------------------|----------------|----------------|----------------|----------------|
| Greater Bendigo | 104,068 | 112,444 | 121,099 | 129,943 |
| Loddon | 7,990 | 7,874 | 7,799 | 7,774 |
| Total (PCP Region) | 112,058 | 120,318 | 128,898 | 137,717 |

www.dse.vic.gov.au/victoriainfuture/ and www.id.com.au/bendigo/forecastid/ *(based on *Victoria in Future* 2008 population projections for Loddon and i.d. consulting population projections for City of Greater Bendigo)

Age structure

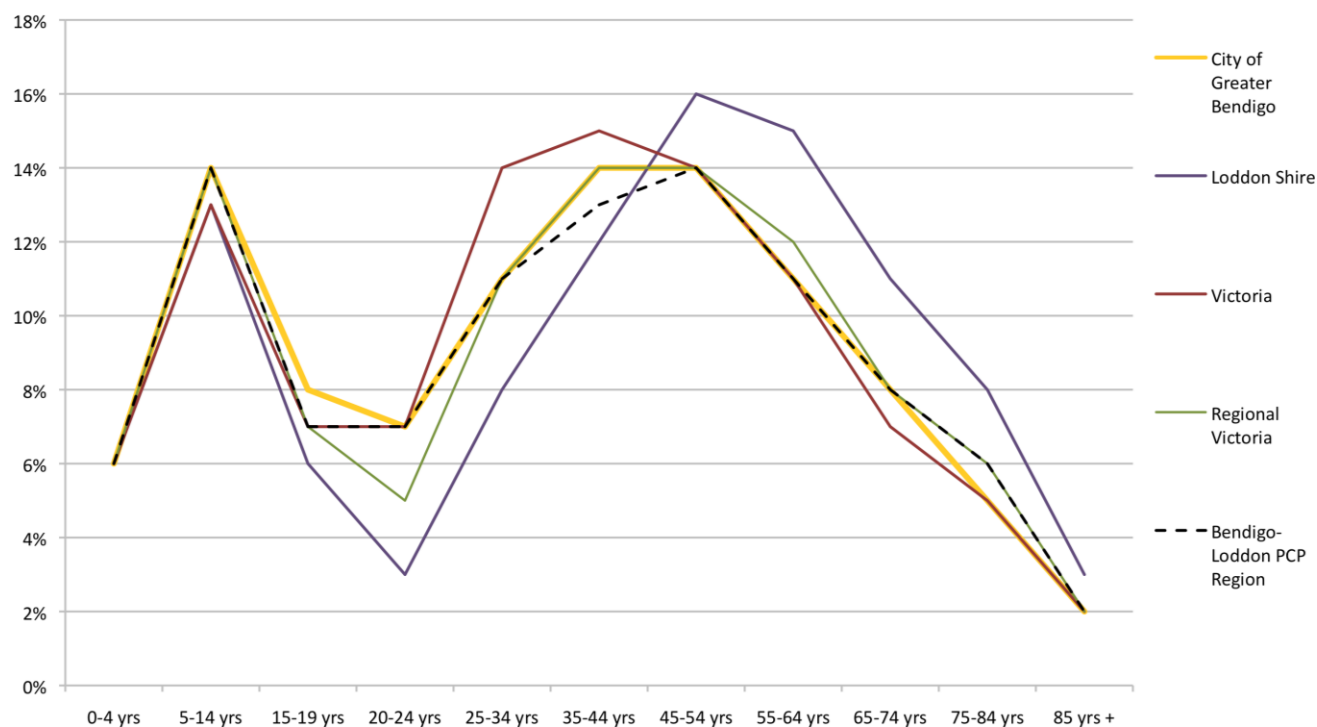
The age structure of the Bendigo Loddon PCP region is similar to that of Regional Victoria, while it has a higher proportion of population aged 65 to 84 compared to Victoria. However, this pattern is influenced by the presence of the regional city of Bendigo in the PCP region. Loddon Shire's age structure is markedly different to City of Greater Bendigo, Regional Victoria and Victoria. A lower proportion of population in the 15 to 44 year old age brackets and a higher proportion of population in the 45 to 85+ years age brackets reflects the trends in many rural areas of population leaving to seek education and employment.

Age structure of population (2006)

| Age | Greater Bendigo | | Loddon | | BLPCP region | | Regional Victoria | | Victoria | |
|--------------|-----------------|-------------|--------------|-------------|----------------|-------------|-------------------|-------------|------------------|-------------|
| 0-4 | 5,779 | 6% | 434 | 6% | 6,213 | 6% | 80,873 | 6% | 305,938 | 6% |
| 5-14 | 13,295 | 14% | 1057 | 13% | 14,352 | 14% | 191,581 | 14% | 644,451 | 13% |
| 15-19 | 7,013 | 8% | 461 | 6% | 7,474 | 7% | 94,095 | 7% | 335,181 | 7% |
| 20-24 | 6,454 | 7% | 245 | 3% | 6,699 | 7% | 71,653 | 5% | 338,715 | 7% |
| 25-34 | 10,710 | 11% | 637 | 8% | 11,347 | 11% | 142,017 | 11% | 677,883 | 14% |
| 35-44 | 12,637 | 14% | 939 | 12% | 13,576 | 13% | 184,733 | 14% | 741,348 | 15% |
| 45-54 | 13,179 | 14% | 1235 | 16% | 14,414 | 14% | 193,215 | 14% | 679,516 | 14% |
| 55-64 | 10,356 | 11% | 1161 | 15% | 11,517 | 11% | 162,298 | 12% | 534,487 | 11% |
| 65-74 | 7,030 | 8% | 868 | 11% | 7,898 | 8% | 109,806 | 8% | 345,526 | 7% |
| 75-84 | 4,998 | 5% | 596 | 8% | 5,594 | 6% | 77,383 | 6% | 245,506 | 5% |
| 85 + | 1,802 | 2% | 203 | 3% | 2,005 | 2% | 25,782 | 2% | 83,872 | 2% |
| Total | 93,253 | 100% | 7,836 | 100% | 101,089 | 100% | 1,333,436 | 100% | 4,932,423 | 100% |

ABS 2006 census www.abs.gov.au

Age structure of Bendigo-Loddon PCP population 2006

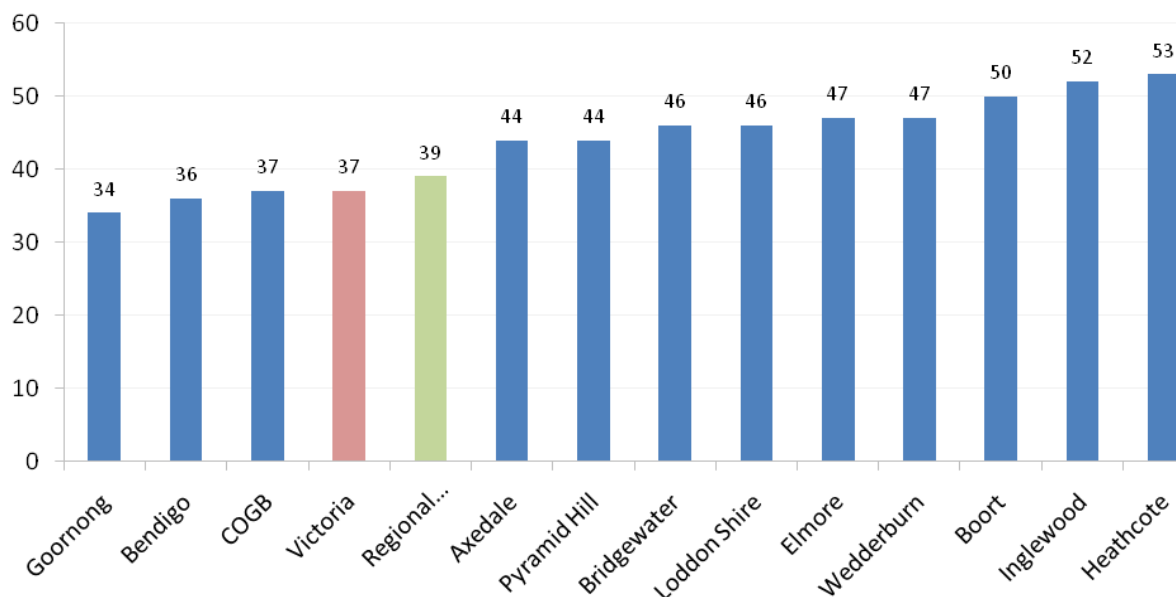


ABS 2006 census www.abs.gov.au

Median age

In 2006, the median age of Loddon Shire's population was 46 and Greater Bendigo's population was 37, compared to 37 for Victoria and 39 for regional Victoria. This reflects the general trend of aging population seen in many rural communities and the capacity of larger centres to attract younger population.

Median ages in towns of the Bendigo-Loddon PCP region 2006



2006 census www.abs.gov.au

Age structure by town

In 2006, 21% of Loddon Shire's population was aged over 65, compared to 15% in Greater Bendigo. Bendigo and neighbouring commuter towns, Goornong and Axedale, had a lower proportion of population in this age bracket, while more isolated towns had a higher proportion.

Compared to Regional Victoria (6.0%), Loddon Shire (5.5%) and Greater Bendigo (6.2%) had a similar proportion of population aged 0-4 yrs. Most small towns in the region had a similar or lower proportion of population in this age group, except Goornong, which had 8%.

In 2006, 5.9% of Loddon's population was aged 15-19yrs, compared to Regional Victoria and Victoria (both 7%), while Greater Bendigo had 7.5%. Many small towns had a lower proportion of population in this age group, although Axedale (8.2%) had the highest proportion. In 2006, 3% of Loddon's population was aged 20-24yrs, while 7% of Greater Bendigo's population was in this age group. In most cases, Bendigo had at least double the proportion of population in this age bracket compared to small towns in the PCP region.

Age groups by location (2006)

| | 0-4 yrs | | 15-19 | | 20-24 | | 65 yrs and over | |
|--------------------------|----------------|-------------|----------------|-------------|----------------|-------------|-----------------|--------------|
| | Number | % of Pop. | Number | % of Pop. | Number | % of Pop. | Number | % of Pop. |
| Axedale | 7 | 3.0% | 19 | 8.2% | 4 | 1.7% | 22 | 9.5% |
| Bendigo | 4,899 | 6.4% | 5,740 | 7.5% | 5,825 | 7.7% | 11,665 | 15.3% |
| Boort | 35 | 4.5% | 49 | 6.4% | 15 | 1.9% | 247 | 32.0% |
| Bridgewater | 18 | 4.6% | 27 | 6.9% | 14 | 3.6% | 87 | 22.2% |
| Gr. Bendigo (LGA) | 5,779 | 6.2% | 7,013 | 7.5% | 6,454 | 6.9% | 13,830 | 14.8% |
| Elmore | 38 | 5.5% | 31 | 4.5% | 19 | 2.7% | 173 | 24.9% |
| Goornong | 24 | 7.9% | 14 | 4.6% | 18 | 6.0% | 39 | 12.9% |
| Heathcote | 57 | 3.6% | 85 | 5.4% | 55 | 3.5% | 521 | 33.1% |
| Inglewood | 36 | 5.3% | 29 | 4.2% | 24 | 3.5% | 221 | 32.3% |
| Loddon Shire (LGA) | 434 | 5.5% | 461 | 5.9% | 245 | 3.0% | 1,667 | 21.3% |
| Pyramid Hill | 27 | 5.8% | 19 | 4.1% | 15 | 3.2% | 108 | 23.3% |
| Wedderburn | 42 | 6.0% | 33 | 4.7% | 26 | 3.7% | 191 | 27.2% |
| <i>Regional Victoria</i> | <i>80,873</i> | <i>6.0%</i> | <i>94,095</i> | <i>7.1%</i> | <i>71,653</i> | <i>5.4%</i> | <i>212,971</i> | <i>16.0%</i> |
| Victoria | 305,938 | 6.2% | 335,181 | 6.8% | 338,715 | 6.9% | 674,904 | 13.7% |

Source: ABS population of usual residence 2006

Projected change to population age structure

The 2008 Victoria in Future population projections set out the projected change in population structure by year. As the table below illustrates, the proportion of population aged 65 or over is projected to increase significantly. The projected proportion of population aged 65 or over for Greater Bendigo and Loddon is higher than for Victoria and Loddon is projected to have a much higher proportion of population aged 65 years and over than Greater Bendigo.

Projected change to 65 yrs + age group 2011 - 2021

| | 2011 | | 2016 | | 2021 | |
|-------------------|----------------|--------------|----------------|--------------|----------------|--------------|
| | number | % of pop. | number | % of pop. | number | % of pop. |
| Greater Bendigo | 16,243 | 15.3% | 20,056 | 17.3% | 24,303 | 19.3% |
| Loddon Shire | 1,763 | 22.1% | 2,000 | 25.4% | 2,202 | 28.2% |
| Regional Victoria | 250,278 | 17.1% | 303,277 | 19.6% | 359,268 | 22.1% |
| Victoria | 790,018 | 14.2% | 945,920 | 15.9% | 1106645 | 17.5% |

Victoria in future population projections (2008) www.dse.vic.gov.au/victoriainfuture/

Family structure

Data from the 2006 census indicates that Loddon Shire had a higher proportion of couple families with no children (47%) than the Victorian average (36%). Compared to the Victorian average, Loddon and Greater Bendigo had a lower proportion of couple families with children (of any age) and Greater Bendigo had a higher proportion of lone parent families with children aged under 15yrs. Loddon had a lower proportion of lone parent families, with children of any age, compared to the Victorian average.

Family composition (2006)

| | Greater Bendigo | | Loddon | | Victoria |
|--|------------------------|--------------------------|---------------|--------------------------|--------------------------|
| | Number | % of all families | Number | % of all families | % of all families |
| Couple family with no children | 9,391 | 38% | 981 | 47% | 36% |
| Couple family with children | 10,408 | 42% | 815 | 39% | 47% |
| <i>Couple family with children under 15</i> | 7,421 | 30% | 564 | 27% | 31% |
| <i>Couple family with no children under 15</i> | 2,987 | 12% | 251 | 12% | 15% |
| One parent family with children | 4,431 | 18% | 275 | 13% | 15% |
| <i>One parent family with children under 15</i> | 2,654 | 11% | 153 | 7% | 8% |
| <i>One parent family with no children under 15</i> | 1,777 | 7% | 122 | 6% | 7% |
| Other family | 369 | 2% | 33 | 2% | 2% |
| Total | 24,599 | 100% | 2,104 | 100% | 100% |

www.abs.gov.au

Cultural diversity

In 2006, most Bendigo-Loddon PCP region residents were born in Australia. After Australia, the most common countries of birth were United Kingdom, New Zealand, Netherlands and Germany.

Country of Birth (2006)

| | Greater Bendigo LGA | | Loddon LGA | | Regional Victoria | |
|---|---------------------|-------------|--------------|-------------|-------------------|---------------|
| | Number | Percentage | Number | Percentage | Number | Percentage |
| Australia | 82,848 | 89% | 6,888 | 88% | 1,124,362 | 84.3% |
| Austria | 36 | 0% | 3 | 0% | 1,063 | 0.1% |
| Bosnia and Herzegovina | 10 | 0% | 0 | 0% | 621 | 0.0% |
| Cambodia | 6 | 0% | 0 | 0% | 145 | 0.0% |
| Canada | 62 | 0% | 0 | 0% | 1,041 | 0.1% |
| Chile | 0 | 0% | 0 | 0% | 147 | 0.0% |
| China (excl. SARs and Taiwan Province) | 122 | 0% | 0 | 0% | 1,752 | 0.1% |
| Croatia | 46 | 0% | 12 | 0% | 2,809 | 0.2% |
| Cyprus | 14 | 0% | 0 | 0% | 371 | 0.0% |
| Egypt | 21 | 0% | 3 | 0% | 418 | 0.0% |
| Fiji | 25 | 0% | 0 | 0% | 539 | 0.0% |
| Former Yugoslav Republic of Macedonia | 6 | 0% | 0 | 0% | 1,025 | 0.1% |
| France | 21 | 0% | 0 | 0% | 537 | 0.0% |
| Germany | 242 | 0% | 32 | 0% | 6,896 | 0.5% |
| Greece | 78 | 0% | 9 | 0% | 2,009 | 0.2% |
| Hong Kong (SAR of China) | 22 | 0% | 0 | 0% | 500 | 0.0% |
| Hungary | 30 | 0% | 8 | 0% | 821 | 0.1% |
| India | 123 | 0% | 3 | 0% | 2,054 | 0.2% |
| Indonesia | 71 | 0% | 0 | 0% | 556 | 0.0% |
| Iran | 0 | 0% | 0 | 0% | 293 | 0.0% |
| Iraq | 15 | 0% | 0 | 0% | 646 | 0.0% |
| Ireland | 103 | 0% | 12 | 0% | 1,954 | 0.1% |
| Italy | 150 | 0% | 8 | 0% | 9,008 | 0.7% |
| Japan | 25 | 0% | 0 | 0% | 479 | 0.0% |
| Korea, Republic of (South) | 21 | 0% | 0 | 0% | 327 | 0.0% |
| Lebanon | 6 | 0% | 3 | 0% | 277 | 0.0% |
| Malaysia | 105 | 0% | 9 | 0% | 1,276 | 0.1% |
| Malta | 51 | 0% | 10 | 0% | 1,888 | 0.1% |
| Mauritius | 11 | 0% | 0 | 0% | 210 | 0.0% |
| Netherlands | 279 | 0% | 35 | 0% | 8,229 | 0.6% |
| New Zealand | 567 | 1% | 65 | 1% | 11,363 | 0.9% |
| Papua New Guinea | 44 | 0% | 0 | 0% | 484 | 0.0% |
| Philippines | 177 | 0% | 3 | 0% | 2,761 | 0.2% |
| Poland | 45 | 0% | 0 | 0% | 1,613 | 0.1% |
| Portugal | 0 | 0% | 0 | 0% | 193 | 0.0% |
| Romania | 9 | 0% | 0 | 0% | 300 | 0.0% |
| Russian Federation | 10 | 0% | 3 | 0% | 262 | 0.0% |
| Samoa | 6 | 0% | 0 | 0% | 206 | 0.0% |
| Singapore | 41 | 0% | 3 | 0% | 620 | 0.0% |
| South Africa | 116 | 0% | 3 | 0% | 1,998 | 0.1% |
| South Eastern Europe, not further defined | 32 | 0% | 15 | 0% | 1,693 | 0.1% |
| Spain | 3 | 0% | 0 | 0% | 527 | 0.0% |
| Sri Lanka | 101 | 0% | 0 | 0% | 842 | 0.1% |
| Taiwan | 6 | 0% | 0 | 0% | 146 | 0.0% |
| Thailand | 38 | 0% | 0 | 0% | 620 | 0.0% |
| Turkey | 8 | 0% | 0 | 0% | 1,147 | 0.1% |
| Ukraine | 8 | 0% | 0 | 0% | 465 | 0.0% |
| United Kingdom | 2,199 | 2% | 221 | 3% | 48,026 | 3.6% |
| United States of America | 115 | 0% | 9 | 0% | 2,134 | 0.2% |
| Viet Nam | 27 | 0% | 4 | 0% | 877 | 0.1% |
| Born elsewhere | 325 | 0% | 36 | 0% | 8,905 | 0.7% |
| Total | 93,252 | 100% | 7,836 | 100% | 1,333,436 | 100.0% |

ABS 2006 Census www.abs.gov.au